

Including the
parallel IBD Meeting

The 21st Annual International Congress

Frontiers in Colorectal and Intestinal Disease

Spotlight on Colorectal Cancer

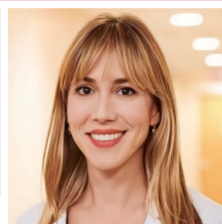
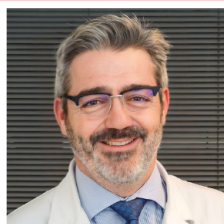


STMARK'S

National Bowel Hospital

8-10 November 2023

Please join us in person at this live event, or as part of our large international audience online!
This year we will be at the magnificent Glaziers Hall, 9 Montague Close, London Bridge, London SE1 9DD



Sir Alan Parks
Visiting Professor

Eloy Espín Basany

ESCP President
Professor of Surgery
Barcelona, Spain

Basil Morson
State of the Art Lecture

Andrea Cercek

Memorial Sloan Kettering
Cancer Center, New York

Sir Francis Avery Jones
Visiting Professor

James East

John Radcliffe Hospital
Oxford, UK

John Lennard Jones
State of the Art Lecture

Rodrigo Perez

Hospital Alemão Oswaldo
Cruz, São Paulo, Brazil



www.stmarksacademicinstitute.org.uk



Parallel IBD Meeting

'Don't stop when you have hit the target of inflammation.'



09:00 Welcome from the Sub-Dean **Phil Tozer**

09:00

Ulcerative colitis

In this session, we will look at hitting the inflammatory target with our best drugs early and hard in ulcerative colitis patients, what to do when hitting inflammation hard is not hard enough and consider checklists and algorithms for patients undergoing surgery to achieve optimal outcomes.

Chairs: Phil Tozer, Ravi Misra

09:00

Hitting the inflammatory target ... early and hard

Chris Lamb

09:15

Best choice(s) for gut and joint inflammation

Patrick Kiely

09:30

When hard is not hard enough ... when and how to discuss surgery

Janindra Warusavitarne

09:45

Pouches - the beginning of the end or the end of the beginning

Ailsa Hart

10:00

Panel discussion and cases

10:30-11:15 Break

10:45-11:15 Symposium by BMS Medical

11:15

Crohn's disease

Session sponsored by Celltrion

In this session, we will look at the trickier aspects of Crohn's disease management from top to bottom, looking at diagnostic dilemmas, optimising patients for surgery, and managing refractory and perianal Crohn's disease.

Chairs: Janindra Warusavitarne, Ailsa Hart

11:15

Are small bowel strictures always Crohn's - diagnostic dilemmas?

Ravi Misra

11:30

Getting the patient ready for surgery - failing to prepare is preparing to fail

Richard Holman

11:45

Is some disease born to be refractory?

Nick Powell

12:00

Perianal CD - getting to the bottom of it

Phil Tozer

12:15

Panel discussion and cases

12:45

State of the art lecture: Vaccines and IBD

James Alexander

13:15-14:15 Lunch

13:30-14:15 Symposium by Galapagos



Parallel IBD Meeting

'Don't stop when you have hit the target of inflammation.'



14:15

The glue that holds the IBD patient together

In this session, we will look at developing and delivering consistent models of care for monitoring patients, answering patients' questions about diet and IBD, when and how to offer psychological support and can we do better at treating mental health issues in IBD patients.

Chairs: Ailsa Hart, Nik Kamperidis

14:15

Improved and efficient pathways for patients with IBD

Lisa Younge

14:30

What do I do with my diet?

Gabriela Poufou

14:45

How to psychologically BOOST your IBD patient

Chris Norton

15:00

Can we do better at treating mental health issues using drugs?

Calum Moulton

15:15

Panel discussion

15:45-16:30 Break

16:00-16:30 Symposium by Janssen

16:30

State of the art lecture: IBD in 2050... what does the future look like?

James Lee

16:55

MDT case discussion: cases discussed amongst the multidisciplinary team

Panel: Ailsa Hart, Phil Tozer, Janindra Warusavitarne, Lisa Younge, Gabriela Poufou, Phil Lung, James Lee

17:40 Close

17:40-18:30 Symposium by Takeda

With thanks for their support



Galápagos

Pioneering for patients



The ACPGBI will be awarding 15 CPD points for attendance.

* No input into the agenda, content or speakers.

Frontiers is supported by



European Crohn's and Colitis Organisation

PLEASE HELP US TO SUPPORT THE ST MARK'S ACADEMIC INSTITUTE

The St Mark's Academic Institute is part funded by the St Mark's Hospital Foundation. We rely on charitable donations to support education and research at St Mark's Hospital, which includes our educational output. If you would like to support us we would appreciate it. www.stmarkshospitalfoundation.org.uk/donate



email: info@stmarksacademicinstitute.org.uk

Frontiers 2023 Programme v3.8, 26th October 2023



www.stmarksacademicinstitute.org.uk